



Líonra Páirtíochta Pobail Chiarraí  
KERRY PUBLIC PARTICIPATION NETWORK

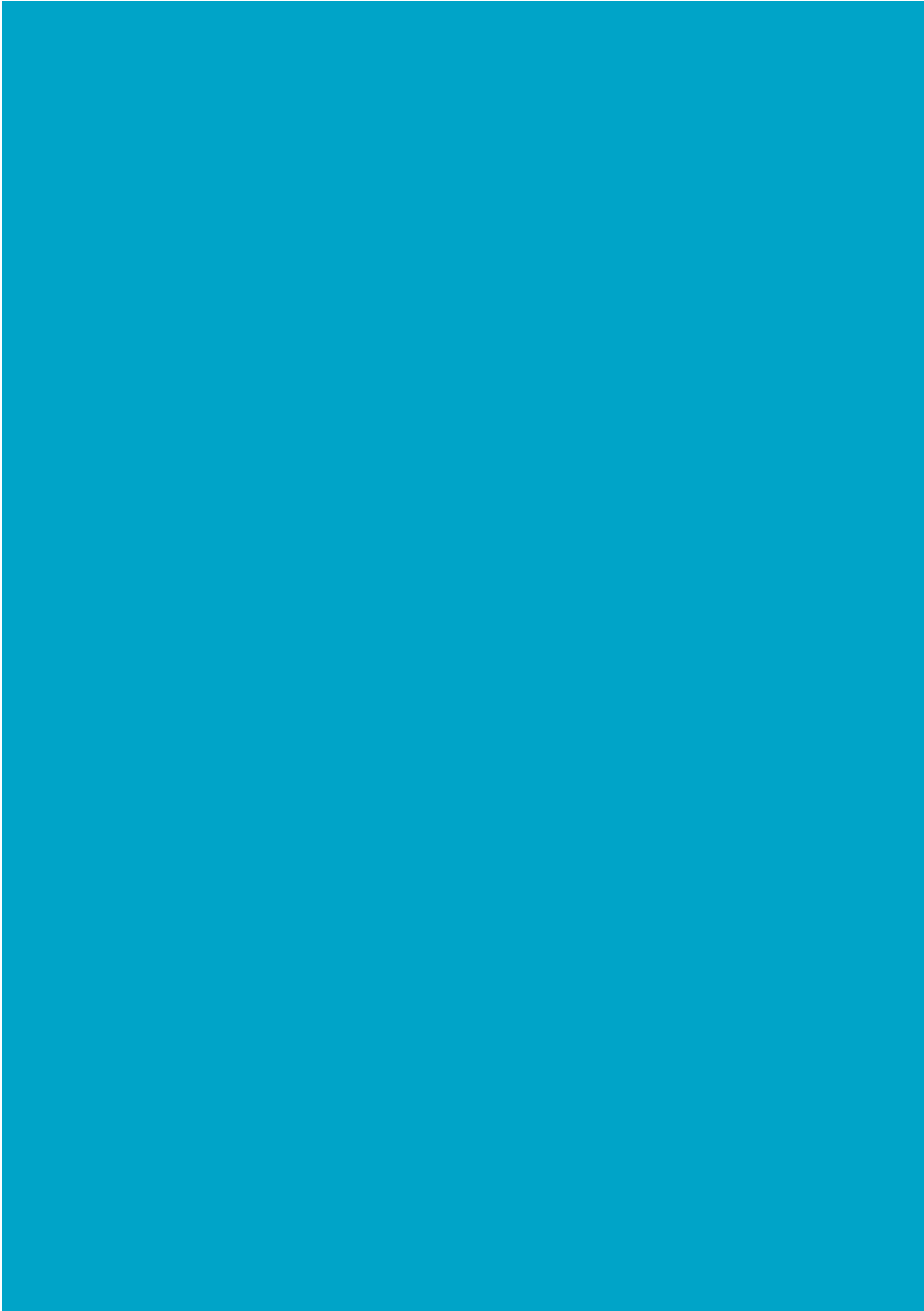
*The Voice of the Community*

Our Vision *for*

COMMUNITY  
WELLBEING

*in* COUNTY KERRY







**Líonra Páirtíochta Pobail Chiarraí**

**KERRY PUBLIC PARTICIPATION NETWORK**

*The Voice of the Community*

## *Overall Vision for County Kerry*

“ Kerry is a resilient and inclusive community that embraces diversity and has a strong ethos of volunteering.

*Thinking here is future focussed, promoting growth and prosperity.*

*Good infrastructure and services, and the dynamism of our economy enables endless opportunities and incentives for all. We treasure our history, heritage, culture, sports and recreation and work to ensure it is enjoyed for generations to come.*

*We have strong local government, engagement and interactions are outcome focused.*

*All voices are listened to and respected.* ”

## Introduction

**A Vision for Community Wellbeing identifies the key issues that member groups in Kerry PPN consider are important for their community to be ‘The best that it can be for this and future generations’ | 2020-2024**

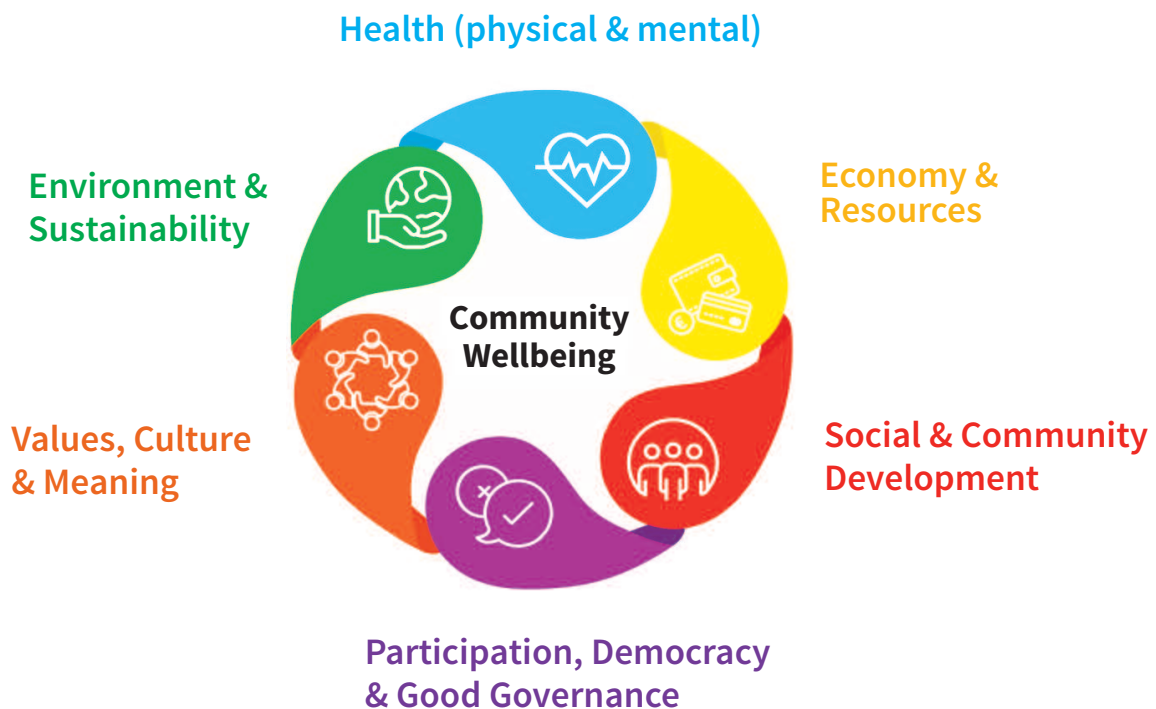
Kerry Public Participation Network (Kerry PPN) is an independent network of Community and Voluntary Organisations across County Kerry.

Our Vision for Community Wellbeing is an all-encompassing vision that the member groups of Kerry PPN have for Kerry. Although we often think about wellbeing in terms of good physical and mental health, it can also describe the wider conditions we need as individuals and communities to have a better quality of life, healthier environment and increased prosperity.

Our vision has been developed through a bottom-up process with member groups and is the mandate for Kerry PPN Representatives as they represent Kerry PPN membership on decision making bodies across the county.

Our vision has an overarching Vision for County Kerry. Alongside the overarching vision for County Kerry, is our vision for each community wellbeing ‘domain’ or aspect.

These wellbeing domains are:





Kerry PPN wishes to express its sincere gratitude to everyone who helped and contributed in any way to the creation of this Community Wellbeing Vision for County Kerry; all those who participated in our wellbeing consultation workshops, the online consultation, through the feedback process on the draft document, through to this final document to help make our County Kerry ‘The best that it can be for this and future generations’.

Yours sincerely

**Caroline Toal**

*Kerry PPN Development Officer*

**Eamon O’Keeffe**

*Kerry PPN Support Worker*

**Kerry PPN Secretariat Members**

Jennifer Coffey O’Sullivan

Anluan Dunne

Maura Fitzgerald

Anne Marie Fuller

Stephanie Mahey

Bill Morrell

Dr. Peadar Ó Fionnáin

Connie O’Leary

John O’Sullivan

John Spillane

Gillian Wharton Slattery

**Sector**

*Community and Voluntary*

*Community and Voluntary*

*Social Inclusion Pillar*

*Environmental Pillar*

*Kenmare MD*

*Environmental Pillar*

*Castleisland/Corca Dhuibhne MD*

*Killarney MD*

*Listowel MD*

*Social Inclusion Pillar*

*Tralee MD*

**Siobhan Griffin**

*KCC Liaison Officer*

**Acknowledgements:** Kerry PPN wishes to express its sincere gratitude to everyone who helped and contributed in any way to the creation of this Community Wellbeing Vision for County Kerry; the community group members who participated in our wellbeing consultation workshops, the online consultation, through the feedback process on the draft document, through to this final document. To Social Justice Ireland for providing the Development of a Community Wellbeing Vision training and to Dr. Harriet Emerson who guided the process and added her invaluable knowledge. The members of Kerry PPN Secretariat, who attended the training, helped facilitate consultation workshops and helped draw all the inputs into this final document. Kerry PPN Development Officer, Caroline Toal and Support Worker Eamon O’Keeffe who organised and facilitated the consultation workshops; online consultation and worked to help draft and bring the consultation process to this final document. To all the staff within Kerry County Council, Municipal District Officers and the Community Department who supported the development of the Community Wellbeing Vision workshops by facilitating, participating and engaging, thank you all. Kerry County Council and Department of Rural and Community Development who fund and support this and all the work of Kerry PPN. The development of this Community Wellbeing vision is an excellent example of ground up consultation and is reflective of how you want your county to be ‘The best that it can be for this and future generations’.

*Disclaimer: This publication provides a report on the participants feedback from the development of the community wellbeing workshops that took place in person in the five Municipal Districts in County Kerry and the following online consultation process. The opinions and views expressed in this publication are those of the participants who attended the workshops and took part in the online consultation process.*

# *Digest for PPN Representatives*

This digest is intended to help PPN representatives scan the Visions of the different Municipal Districts and overall County quickly to identify relevant content. It is NOT a complete index so when looking particularly for material that relates to specific or detailed issues, PPN representatives need to have good overall familiarity with the Visions and are reminded to consider not only material that directly relates to an issue, but what would have bearing on it.

In addition, representatives should recognise that the Visions contain strong threads of inclusion, equality of access and opportunity, etc. that indicate how PPN member groups wish to see the community.

## Index

Digest of Kerry PPN Wellbeing Visions	6
Vision for Culture, Values & Meaning	10
Vision for Environment & Sustainability	12
Vision for Health (Physical & Mental)	14
Vision for Participation, Democracy & Good Governance	16
Vision for Social & Community Development	18
Vision for Work, Economy & Resources	22

### INDIVIDUAL MUNICIPAL DISTRICT VISIONS

Castleisland/Corca Dhuibhne MD Vision	27
Kenmare MD Vision	31
Killarney MD Vision	35
Listowel MD Vision	39
Tralee MD Vision	43

## Overall Vision

The overall County Vision is set out. This essentially captures the Visions of the 5 separate MDs. Additional topics or key words contained in the 5 MD Visions are listed beneath the overall Vision.

## Themes *(coloured headings)*

The Visions of the 5 MDs are considered together under each of the 6 Community Wellbeing themes. The issues that are specifically addressed in all five MDs are then presented, followed by those identified in 4 of the MDs, 3 of the MDs, 2 of the MDs and lastly by those appearing in only one. A list of key words used in relation to the issue is given.

## Abbreviations

<b>PPN</b>	Public Participation Network
<b>C</b>	Castleisland/Corca Dhuibhne MD
<b>MD</b>	Municipal Districts
<b>Ke</b>	Kenmare MD
<b>VCW</b>	Vision for Community Wellbeing
<b>Ki</b>	Killarney MD
<b>L</b>	Listowel MD
<b>T</b>	Tralee MD

## Important Note

An issue or topic (or details about a topic) may appear in the Vision of only one MD. *This does not necessarily mean that the same view of that topic (or the details about it) would not be supported in others or all of the other MD.* The topic may simply not have arisen in the consultations in those MDs, it may have been assumed, or taken for granted and so forth.

Remember that the VCW will be reviewed at regular intervals. Member groups will become increasingly familiar with the Vision as it is consistently used as the reference guide by the PPN and its representatives, as well as becoming more widely known about (in the Local Authority, other agencies and publicly). As a result, community groups will be keen for it to comprehensively address all the issues they feel are vital to achieve Community Wellbeing and so the Vision will evolve, possibly becoming more extensive, consistent and specific.

In addition, the MD consultations (workshops and online inputs) generated a range of more detailed and specific goals. A record of these was kept and is available to PPN reps for reference. Please remember that there is not a consensus of support on each of these as the Vision is at a more general overview level, and also that there will be many more detailed goals and objectives amongst the PPN member groups which were not captured.

# Community Wellbeing

## Environment & Sustainability

How do we value our **natural environment and man-made heritage**? What can be done to conserve, protect and restore these?  
How can we **interact with the environment in a sustainable way**, and **hand it on to the next generation in a better state**?

## Health (physical & mental)

How can all members of our community enjoy the **best possible physical and mental health**?  
What about people with **special needs, older people, and carers**?

## Economy & Resources

How can our communities **thrive economically, with good jobs, and supports for enterprise, business and for people not in work**?  
What resources do we have and are they used effectively without causing harm to social and environmental sustainability?



## Values, Culture & Meaning

What is needed to ensure that **everyone feels, and actually is, included and valued, and that our different values and cultures are respected** and nurtured?  
What are the important parts of our culture that we want to hand on to future generations?

## Participation, Democracy & Good Governance

What is necessary to ensure that our **local government structures support the wellbeing of our community** for this and future generations?  
What is necessary to ensure that we have a voice in the decisions **that affect us**, and that all voices are being heard?

## Social & Community Development

How can we be an **inclusive community** where we support each other and ensure no one is left out?  
What are the **important social services and facilities** we need to live well from childhood to old age?

# The Kerry PPN Vision for Community Wellbeing

## How did we create this Wellbeing Vision?



### 1. Workshop

PPN Members were invited to attend Community Wellbeing workshops. At these workshops the Community Wellbeing concept was presented.



### 2. Asset Mapping

Working in groups, attendees then highlighted the 'assets' and aspects of their community that wish to, preserve and protect for current and future generations.



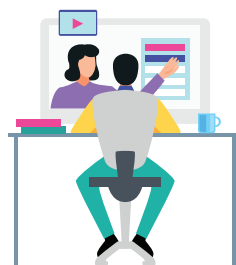
### 3. Wellbeing Vision

Using the 6 Community Wellbeing headings, attendees shared what they (and the organisations they work for) considered to be important for their community's wellbeing.



### 4. Consultation

Follow the workshop, an online consultation was shared with members who were unable to attend the workshops. They were provided the opportunity to answer the same questions asked at the workshops.



### 5. Draft Vision

The PPN resource workers and secretariat members then analysed the responses from the workshop and online consultation. They then produced the draft wellbeing statements.



## VISION FOR

# Culture, Values and Meaning

There are strong common themes in the visions of the 5 MDs under this heading but no universally common elements were identified beyond concerns with culture, built heritage and active protection of what is valued.

### Other issues and key words contained in specific MD Visions for Values, Culture and Meaning:

(C) Castleisland/Corca Dhuibhne MD, (Ke) Kenmare MD, (Ki) Killarney MD, (L) Listowel MD, (T) Tralee MD

Abilities (Ki1)	Enriched (Ke1)	Pass on (C1, Ki1)
Access/ ible (Ke1, T1)	Everyone (Ki1)	Practice/ practised (L1)
Admire/d (L1)	Experience (T1)	Precious (Ke1)
Age groups (C1, Ki1)	Fauna (L1)	Preserve (C1, Ki1, T1)
Appreciate (T1)	Festival/s (C1)	Protect (C1, Ke1, Ki1, L1, T1)
Archaeology/ical (Ke1)	Flora (L1)	Resources (Ke1)
Architectural (T1)	Folklore (Ke1, T1)	Respect/ful (Ki1, T1)
Arts (Ke1, T1)	Future generations (Ke1)	Rich (C1, T1)
Beauty (L1)	Generation/s (C1, T1)	Sense of community & place (Ki1)
Built heritage (C1, Ke1, Ki1, L1, T1)	Green spaces (T1)	Share/ing (C1, Ki1)
Capture (Ki1)	Heritage (Ke1, L1, T1)	Showcase (Ke1)
Celebrate (C1, Ki1, L1, T1)	History (C1, Ki1, L1, T1)	Skills (Ki1)
Cherish (Ke1, T1)	Honour (C1, T1)	Sport(s) (C1, Ke1)
Craftmanship (Ke1)	Importance (L1)	Storytelling (C1)
Creative/creatively (Ke1)	Included/ inclusive (Ke1, Ki1, T1)	Supports/ supported (C1, Ke1, Ki1)
Commemoration/s (C1)	Integrate/d (C1, Ki1)	Together (T1)
Community (Ke1, Ki1, T1)	Irish (C1, Ke1, Ki1)	Tourism (C1)
Connect (Ki1)	Landscape (L1)	Town (T1)
Consciousness (L1)	Language (Ke1, T1)	Tradition/s (Ke1, Ki1, L1, T1)
Craftsmanship (C1)	Learning (L1, T1)	Treasure/d (L1)
Culture/s, al (C1, Ke1, Ki1, L1, T)	Life (Ke1)	Unique/ness (Ke1, L1)
Custodians (T1)	Live/ing (C1, T1)	Value/d (Ke1, T1)
Deep-rooted (L)	Multi-cultural (L1)	Values (T1)
Developed (C)	Music (C1, Ke1)	Vibrant (Ke1)
Different/ difference (Ki, T)	Nationalities (C1)	Visitor/s (C)
Diverse/ity (Ke1, Ki1, L1, T1)	Natural (L1)	Welcome/ ing (C1, Ke1)
Encourage (T1)	Parks (T1)	Work (C1, Ke1)
Enjoy (T1)	Participate (C1)	Work together (Ke1)

**Issues specifically addressed within the theme of Culture, Values and Meaning:**

(C) Castleisland/Corca Dhuibhne MD, (Ke) Kenmare MD, (Ki) Killarney MD, (L) Listowel MD, (T) Tralee MD

**In all 5 MDs****Living Irish Culture & Heritage**

(C1, Ke1, Ki1, L, L1.1, T1)

accessible, active, alive, arts, all aspects, all generations together, appreciate, archaeology, built heritage, capture, celebrate/d, cherish, commemorations, consciousness, continue, craftsmanship, culture, deep-rooted, enjoy, exciting, experience, festivals, folklore, future generations, heritage, history, honour, language, music, pass on, preserve, protect, practised, resonates, rich, sense of community and place, share/ing, showcase, skills, sport, storytelling, supports/ed, tradition/s, traditional livelihoods, treasured, unique, visitors, well-documented, (C- 'strive to ensure our people can work and live well here as they are central to sustaining our culture')

**Sharing & Celebrating all our many Cultures and Diversity**

(C1, Ke1, Ki1, L1, L1.3, T1)

all abilities, all age groups, all aspect of life & work, appreciate, cohesive, community, celebrate, changing faces, community, connect, creative, culture/cultural, difference/different, diverse/diversity, encourage, enjoy, enriched, everyone, experience, generation/s, heritage, included/inclusive, integrate/d, learning, living alongside, multicultural, multiple cultures, nationalities, other, participate, passed on, respectful/respecting, rich, sense of community, shares/sharing, support/ed, traditions, valued, values, vibrant, welcome, work together, Built heritage (C, Ke, Ki, L, T) admired, archaeology/archaeological, architectural history, beauty, built environment, built heritage, celebrate, custodians, honour, importance, preserve, protect/ed, share, supports, town, tourism, uniqueness

**Thriving, Creative Community**

(C1, Ke1, Ki1, L1, L1.1, L1.3 & L1.4, T1)

accessible, activity, alive, all aspects, appreciate, arts, commemorations, celebrate, community, culture, creative, diversity, enjoy, enriched, exciting, experience, festivals, folklore, generation/s, hub, language, life-long learning, pass on, people ... sustain our culture, renowned, rich, share/s, supports, together, tourism, vibrant, visitors, work

**In 2 MDs****Arts**

(C1, Ke1, T1)

accessible, alive, cherish, exciting, music, resonates, storytelling, support/s

**Welcome**

(C1, Ke1)

all age groups, all aspects of life and work, everyone, generation/s, included, integrated, other nationalities, participate, share, valued

**In 1 MD****Green & Open Spaces**

(C1, T1)

green spaces, historic parks, protect, value

**Natural Environment**

(L1, L1.2L)

active, admire/d, biodiversity, environment, flora, fauna, important/importance, landscape, natural beauty, natural environment, protect/ed, uniqueness, well-informed



## VISION FOR

# *Environment and Sustainability*

There are strong common themes in the visions of the 5 MDs under this heading. The following captures the common elements in the Visions of all 5 MDs.

*“We are all conscious of our environment and work to ensure that it is protected.”*

### Other issues and key words contained in specific MD Visions for environment and sustainability:

(C) Castleisland/Corca Dhuibhne MD, (Ke) Kenmare MD, (Ki) Killarney MD, (L) Listowel MD, (T) Tralee MD

Access (Ke2)	Innovative (Ke2)	Spectacular (Ki2)
Best practice (C2)	Live (Ki2)	Supported (C2, L2)
Biodiversity (Ke2, T2)	Manage (C2, Ke2, Ki2)	Sustainable/sustainably (Ke2, Ki2, L2, T2)
Built surroundings (C2)	Natural (C2, Ke2, Ki2)	Transport (C2, Ke2, Ki2)
Care/fully (C2, Ke2)	Natural resources (C2, Ke2, L2)	Understand (Ke2)
Community/ies (Ke2)	Opportunities (Ke2, Ki2)	Unique (Ki2)
Depend (T2)	Outdoor (spaces) (C2, Ke2, Ki2)	Value (C2, Ke2)
Eco-friendly (C2)	Planning (Ke2)	Vital (L2)
Educated (Ki2)	Polluted/unpolluted (C2)	Waste (C2, Ke2, Ki2)
Effective/ly (Ki2)	Practice (Ke2)	Well (T2)
Energy (C2, Ke2)	Precious (C2, Ki2)	Well-educated (Ke2)
Enjoy (Ki2)	Protect/ion (C2, Ke2, L2, T2)	Well-informed (Ki2, L2)
Future-proofing (Ke2)	Public health, (Ke2)	Well-planned (Ki2)
Green (C2, Ke2, Ki2)	Recreation (C2, Ke2)	Work/ing (L2, T2)
Heritage (C2, L2)	Safe (Ki2, T2)	
High quality (Ke2)	Scenery (Ke2)	
Initiatives (Ki2)	School (Ki2)	

## Issues specifically addressed within the theme of Environment and Sustainability:

(C) Castleisland/Corca Dhuibhne MD, (Ke) Kenmare MD, (Ki) Killarney MD, (L) Listowel MD, (T) Tralee MD

### In all 5 MDs

#### Active Care for the Environment

(C2, Ke2, Ki2, L2, L2.1-2.3, esp.2,3, T2, all T2.1-2.6, esp 2.4)

accessible, actively, all, biodiversity, built environment, care for, cherish, community groups, depend on, design, enhance, enjoyed/ enjoyment, environment, future-proofing, heritage, importance, live sustainably, manage, natural environment, natural resources, planning, preserve, prevent pollution, proactive, promote understanding, protect, public health, respect, supported, sustainable, working (see also: transport, waste, energy, sustainable living)

#### Planning & Development

(C2, Ke2, Ki2, L2, L2.3, T2.1, 2.5)

atmosphere, built surroundings/ environment, businesses, calm, community, design, energy-efficient, enhancing, enjoyment, future-proofing, green, heritage, homes, imaginative, innovative, living, new development, proactive, preserving, promote, protection, relaxed, respectful, robust, safe, sustainable, townscape, transport system, understanding, value, vibrant, well-planned

#### Transport

(C2, Ke2, Ki2, L2.2, T2.3)

accessible, affordable, all areas, community, eco-friendly transport systems, embrace, excellent, different demands, green, innovative, network, safe, sustainable, various forms, well-connected

#### Waste

(C2, Ke2, Ki2, L2.1, T2.1)

able, activities, all, best practice, biodiversity, business, damage, carefully, educated, effectively, encourage, environmentally friendly, incentivise, initiatives, manage, maximise re-use, minimise production, prevent pollution, public health, recycling, reduce waste production, residents

### In 4 MDs

#### Access & Recreation

(C2, Ke2, Ki2, L2.3)

access, areas, care for, built surroundings, enjoy, great, green, heritage, maintain, opportunities, outdoor spaces, promote, provide, recreation, respectful, scenery, spectacular, supported, unique, value, wonderful nature

#### Energy

C2, Ke2, L2.2, T2.1)

businesses, eco-friendly transport, efficient, green, homes, innovative, development, production, sources, sustainable, transport

#### Sustainable Living Ki

(L2, L2.2, T2, T2.1, T2.5, T2.6, )

community living, design, green, how to, imaginative, innovative, manage, new development, planning, safe, energy sources, vibrant, well, work of community groups

### In 3 MDs

#### Education

Ke2, Ki2, L2, L2.1, L2.3)

able, all aspects, best practice, educated, high-quality, how to care for, how to live sustainably, manage waste, maximise re-use & recycling, precious natural environment, preserving, prevent pollution, promote understanding, protecting, reduce waste, supported, sustainably manage, throughout our lives, understand, value, well-educated, well-informed (see also: energy, transport, waste, etc.)

### In 2 MDs

#### Biodiversity

(K2e, T2, T2.4)

accessible, actively, all, cherish, depend on, enhance, enjoy/ed, protect (see also: waste, transport, planning, etc.)

### In 1 MD

#### Community Support

(C, L2, L2.3, T2.6)

built environment, enhancing, green outdoor spaces, maintain, natural environment, preserving, proactive, protecting, provide, recognise the important work of community groups, recreation



## VISION FOR

# Health (Mental and Physical)

The following captures the common elements in the Visions of all 5 MDs.

*“We **all** have excellent, accessible, mental and physical health services.*

### Other issues and key words contained in specific MD Visions for Health:

(C) Castleisland/Corca Dhuibhne MD, (Ke) Kenmare MD, (Ki) Killarney MD, (L) Listowel MD, (T) Tralee MD

Abilities (C3)	Facilities (C3, Ki3, L3)	Public spaces (C3, Ki3)
All/everyone (C3, Ke3, Ki3, L3, T3)	Familiar (C3)	Recognise/d (Ki3, T3)
Amenities (C3, Ki3)	Food production (Ke3, L3, T3)	Recreation/al (Ke3, Ki3, L3, T3)
Appropriate (Ke3, T3)	Fundamental/s (C3)	Relationships (L3, T3)
Assistance (Ke3)	High quality (Ke3, L3)	Resources, well-resourced (C3, Ke3, Ki3)
Attractive (Ki3)	Holistic (Ke3, T3)	Safe (C3, Ki3, T3)
Care (Ke3)	Housing (C3)	Services (C3, Ke3, Ki3, L3, T3)
Carers (Ki3)	Independent (C3)	Social (C3)
Community (C3, Ke3, Ki3, L3, T3)	Infrastructure (Ki3)	Sport (Ke3, Ki3, L3, T3)
Comprehensive (Ke3, L3, T3)	Life/live/living/lifelong (C3, Ke3, L3, T3)	Strong (C3, L3)
Connections (C3)	Local/locally (C3, Ke3, L3)	Suitable (Ke3)
Consultation (Ke3)	Mainstream (Ke3)	Support (C3, Ke3, Ki3, L3, T3)
Contribute (Ki3)	Natural (C3)	Sustain/ed (L3)
Critical (C3)	Need/s (C3, Ke3, L3, T3)	Transport (L3)
Cycle/cycling (C3)	Network (C3, L3)	Understand (Ke3)
Different groups (C3, Ki3)	Opportunities (C3, Ke3, Ki3, T3)	Volunteer (Ki3)
Disability/ies (Ke3)	Outdoors (C3)	Walking (route/s) (C3, T3)
Diverse (L3)	Out-of-hours (Ke3)	Well (L3, T3)
Educate/d (Ke3, T3)	Outreach (Ki3)	Wellbeing (C3, Ki3, T3)
Elaborate (C3)	People (C3, Ke3)	Welcoming (L3)
Emergency (Ke3)	Positive/ly (Ki3, L3)	Well-informed (Ke3, T3)
Enabled (Ke3)	Potential (L3)	
Enjoy (C3, L3)	Provision/provided (C3, Ke3, Ki3, L3, T3)	
Environment (T3)		
Excellent (C3, Ki3, L3, T3)		



**Issues specifically addressed within the theme of Health:**

(C) Castleisland/Corca Dhuibhne MD, (Ke) Kenmare MD, (Ki) Killarney MD, (L) Listowel MD, (T) Tralee MD

**In all 5 MDs****Access**

(C3, Ke3, Ki3, L3, L3.1, L3.2, L3.3, L3.4, T3, T3.1, T3.4)

accessible, affordable, appropriate, as needed, attractive, community, cycling, design, disabilities, diverse, emergency, enjoy, everyone, facilities, food production, infrastructure, natural amenities, out-of-hours, physical and mental health services, place, public spaces, recognise specific needs, recreational opportunities, safe, sports, supports, walking routes, welcoming

**Active Citizens**

(C3, Ke3, Ki3, L3, L3.1, L3.4 T3, T3.1, T3.2, T3.3, T3.4, T3.5)

access/accessible, active, all/ everyone, assistance as needed, carers, community, contribute, different groups, disabilities, educated, enabled, enjoy, food production, fully informed, fundamentals, independent living, lifelong learning, live healthily, outdoors, natural amenities, opportunities, participate, positively, provision, recognised, recreation, responsible, safe, service providers, sport, supports/ed, support one another, vital, volunteers, well-informed, work

**Healthcare - Mental & Physical**

(C3, Ke3, Ki3, L3, T3, T3.2, T3.3,)

access/ accessible, all, addiction, approaches, as needed, assistance, available, best, community, comprehensive, critical, emergency, everyone, excellent, facilities, good, high quality, holistic, impressive, integrated, life/ lifelong, live, local/ly, mainstream, network, out-of-hours, outreach, outstanding, potential, providers, resources, services, statutory, supports, together, well, wellbeing, well-resourced, work

**Meeting all Different Needs**

(C3, Ke3, Ki3, L3, L3.3, T3, T3.1)

accessible, affordable, appropriate, as needed, carers, community, different groups, diverse, essential, flexible, holistic, housing, independent living, intelligent, mind each other, network, non-judgemental, nurture, positive relationships, safe, specific, strong, supports, sustainable, system, transport, volunteers

**Sports & Recreation**

(C3, Ke3, Ki3, L3, L3.1, T3, T3.4, T3.7)

abilities, accessible, active/activities, affordable, ages, all, amenities, attractive, community, comprehensive, cycling, different group(s), enabled, enjoy, facilities, food production, foundation, fundamentals, healthy living, infrastructure, look, natural amenities, network, opportunities, outdoors, people, potential, public spaces, range, recreation, open, safe, services, support, walking routes, wellbeing, well-resourced

**In 3 MDs****Connected communities**

(C3, L3, T3.1, T3.5)

accessible, community, formed, include everyone, mind each other, nurture, respectful relationships, safe, strong positive relationships, support one another, sustained, welcoming

**In 2 MDs****Well-informed, Educated**

(Ke3, T3, T3.5, T3.7)

achievements, accessible, active, build, educated, effective, enabled, ensure/ing, health/ healthily, importance, informed, lifelong learning, live, recreation, respectful, responsible, safe, technology/ies, throughout our lives, understand, well, wellbeing, well-informed, work

**In 1 MD****Transport**

(L3.3)

affordable, community, different needs, efficient, flexible, options, public, regular, sustainable, system

**Food Production**

(Ke3, L3, L3.4, T3)

community, high quality, local, models, participate, produce, variety



## VISION FOR

# *Participation, Democracy and Good Governance*

The following captures the common elements in the Visions of all 5 MDs.

*“We can influence local government decisions that affect us.”*

**Other issues and key words contained in specific MD Visions for Participation, Democracy and Good Governance:**

(C) Castleisland/Corca Dhuibhne MD, (Ke) Kenmare MD, (Ki) Killarney MD, (L) Listowel MD, (T) Tralee MD

Access (Ke4)	Employment (C4)	Proactive/ly (Ke4)
Accountable (C4, L4, T4)	Empower/ed (T4)	Process (L4)
Actions (C4, T4)	Engage (Ke4)	Provision (Ke4)
Active (C4, Ke4, Ki4)	Equal (T4)	Recognised (T4)
Administration/ive (Ki4)	Ensure(s) (Ki4)	Representative (C4, Ke4, L4)
Affect (us) (Ke4,)	Focus/ed (Ki4)	Requirement(s) (Ki4, T4)
Affordable (Ki4)	Garda (C4)	Resource(s) (T4)
Agency/ies (Ke4)	Governance (T4)	Respect/ed (T4)
All (C4, Ke4, Ki4, L4, T4)	Group(s) (C4, Ki4, T4)	Rural-proofed (Ke4)
Allow/ing (C4, Ke4, L4.2)	Heard (Ki4)	Renown/ed (C4)
Area (C4, Ke4)	Honest (C4)	Safe (C4, Ke4)
Arts (Ke4)	Housing (Ke4)	Seamless (T4)
Assertive (C4)	Inclusive (Ki4)	Secure (C4)
Bureaucracy (Ke4)	Information (C4, Ke4)	Services (T4)
Business development (C4)	Input (Ke4)	Share(s) (C4)
Citizen/s (T4)	Involved (L4, T4)	Skill(s) (Ki4)
Clear (C4, T4)	Issue(s) (T4)	Specific (C4)
Communicate/ion(s) (C4, Ke4, T4)	Interest(s)/ best (C4)	Streamlined (Ki4, T4)
Community/ groups (C4, Ki4, L4, T4)	Joined-up (T4)	Strong (Ke4, Ki4)
Conflict resolution (T4)	Listen/ed (T4)	Support(s) (Ki4, T4)
Conscientious (Ki4)	Local democracy (Ke4, Ki4, L4)	Sustainable transport (Ke4)
Consulted/ation (Ke4, Ki4, L4, T4)	Local Authority (C4, Ke4, L4, T4)	Trace (T4)
Contribution(s) (C4)	Management (C4)	Traffic (C4)
Conversation (Ki4)	Meaningful (Ke4, T4)	Training (Ki4, T4)
Co-ordinate/d (Ke4)	Mentoring (T4)	Transparent (C4, L4)
Cost(s) (Ki4)	Minimal/ minimised (Ke4, Ki4)	Trust (T4)
Decisions/ making (C4, Ke4, L4, T4)	Municipal District (L4, T4)	Value (C4)
Delivery (T4)	Need(s) (Ke4, Ki4)	Voices (T4)
Democracy (Ke4, Ki4, L4)	Old/est (T4)	Volunteer(s) (Ki4)
Diverse (Ki4)	Open (L4)	Wellbeing (C4, Ki4)
Effective/le (C4, Ke4)	Outcome (T4)	Well-informed (Ke4, L4)
Elected/ local representative (C4, Ke4)	Participate/d (T4)	Young/est (T4)
	Policy (Ke4)	

**Issues specifically addressed within the theme of Participation, Democracy and Good Governance:***(C) Castleisland/Corca Dhuibhne MD, (Ke) Kenmare MD, (Ki) Killarney MD, (L) Listowel MD, (T) Tralee MD***In all 5 MDs****Local Authority***(C4, Ke4, Ki4, L4, L4.1, L4.2, L4.3, T4)*

accountable, active, affect us, agencies, all of us, assertive conversation, citizen(s), clear/ly, communicate(s) effectively, community, consultation, conscientious, consulted, consult meaningfully, co-ordinate, decision(s), decision-making process, diverse groups, elected representatives, enable, feedback, focused, funding, genuinely, group(s), honest, inclusive, influence, information, informed, input, interests, involved, issues, joined-up, known, listened to, local, local democracy, local representatives, manner, needs, open, outcome, participate, policy areas, provides opportunities, representative, rural-proofed, seamless delivery of services, secure, see how decisions are made, shares, strong, support(s), trace, transparent, transparent communication, truly representative, trust, understood, wellbeing, well-informed

**Community Engagement with Local Authority***(C4, Ke4, Ki4, L4, T4)*

active, all, appropriate, bureaucracy minimised, citizens, communication, community, community group(s), community consultation, conversation, decision-making, diverse groups, empowered, enable, engage, equal, genuinely consulted, honest, informed, involved, known, listened to, local representatives, Local Authority, meaningful consultation, needs, oldest, participate, proactively, provided, recognised, resources, respected, support(s), transparent communication, understood, voices, well-informed, youngest

**Elected Representatives***(C4, Ke4, L4.1)*

accountable, affect us, assertive, communicate effectively, community, consult meaningfully, conversation, decision(s), feedback regularly, honest, input, Local Authority, local representatives, manner, open, reflect diversity, transparent communication

**Community Groups & Organisations***(C4, Ke4, Ki4, L4.3, T4)*

active, administrative requirements, affordable, all, allocated, appropriate, bureaucracy minimised, community, conflict resolution, contributions, costs, diverse, easy access to information, empowered, enable, equal, funding, governance, grant(s), important, known, many, mentoring, open, participate fully, provided, requirements, resources, skills development, streamlined, support(s), training, transparent, understood, value, volunteers, wellbeing

**In 2 MDs****Safe Place***(C4, Ke4)*

community, effective traffic management, Garda presence, sustainable transport

**In 1 MD****Enterprise***(C4)*

area, business development, good employment, renowned

**Rural Proofing***(Ke4)*

agencies, arts, co-ordinated, housing, local needs, all policy areas, safe and sustainable transport



## VISION FOR

# *Social and Community Development*

The following captures the common elements in the Visions of all 5 MDs.

*“Everyone in our community is supported through provision of good infrastructure and opportunities.”*

### Other issues and key words contained in specific MD Visions for Social and Community Development:

(C) Castleisland/Corca Dhuibhne MD, (Ke) Kenmare MD, (Ki) Killarney MD, (L) Listowel MD, (T) Tralee MD

Access/ible (C5.1.1, C5.1.2, Ki5, L5.4, T5, T5.3, T5.4)	Flourishing (L5)	Proactive (C5)
Active/ly (C5.2, Ki5, T5.5)	Friendly (L5.2)	Quality of Life (L5.4)
Activities (Ke5)	Fulfilled (Ki5)	Recognise (Ki5, L5.5)
Affordable (C5)	Governance (T5.5)	Recreation (C5.1.1, C5.1.4, L5.4, T5.4)
Age(s) (C5.1.4, C5.1.4, L5.2)	Group(s) (Ke5, Ki5, L5.5, T5.3, T5.5)	Requirements (T5.5)
Appropriate (T5.2)	Health (physical & mental) (Ki5, Ki5.1, T5)	Residents (T5.2)
Area (C5.1.3, C5.1.4)	Healthcare/services (L5, L5.3, T5.4)	Resilient (Ki5)
Arts (L5)	Healthy (Ki5, L5.3, T5)	Resourced/ well-resourced (L5.5, T5.3, T5.5)
Attractive (Ke5, Ki5)	Help (Ke5)	Respected (L5.1)
Celebrate/ing (L5)	Heritage (C5.2)	Rural areas (C5.1.3)
Cherish (Ke5)	History (C5.2)	Safe/secure (Ke5, T5)
Childcare (C5.1.2)	Housing/homes (C5.1.3, Ki5, L5, T5.2)	Services (C5.1.1, Ki5.1, L5.2, L5.4, L5.5, T5.3, T5.4)
Collaborate (Ki5)	Inclusive/included (Ki5, L5, T5)	Settlement policies (C5.1.3)
Communication(s) (C5.1.1)	Information system (Ke5)	Shared (C5.2.2)
Community (C5.2, Ke5, Ki5, L5, L5.1, L5.2, L5.5, T5, T5.1, T5.3, T5.5)	Informed (Ke5)	Social/ly (L5.4, T5, T5.1)
Community spirit (L5)	Infrastructure (C5.1.1, Ki5, L5, L5.2, T5.3)	Sport(s) (C5.1.4)
Consultation (Ki5, K5.1)	Innovative (T5.5)	Storytelling tradition (C5.2)
Comprehensive (L5.4)	Integrated (Ki5, T5.1)	Structured (Ki5.1)
Connection/ed (L5.4, T5.1)	Interests (Ki5)	Support/ed (C5.1, Ke5, Ki5, Ki5.1, L5, L5.3, L5.4, L5.5, T5, T5.1, T5.3, T5.5)
Consider/ed (L5.1)	Involved (T5.5)	Together (Ke5)
Culture(s)/al (L5.1, T5.4)	Life/lives/ lifelong (Ke5, Ki5, L5.3, T5, T5.2 T5.4)	Transport (C5.1.1, L5.4, T5.1)
Design (Ki5)	Members (Ke5)	User friendly (T5.5)
Development (Ki5)	Need(s) (Ki5, L5.2, T5, T5.3)	Vibrant (C5.2)
Diverse/ity (Ki5, L5, L5.1, T5)	Neighbourhood(s) (Ke5)	Volunteers/volunteering (Ki5, L5, L5.5, T5.5)
Education (C5.1.2, L5.3, L5.4, T5.4)	Network (T5.1)	Well/ Wellbeing (Ki5, Ki5.1, L5.3)
Empowered (L5.1)	Older citizens (L5.2)	Well-maintained (Ke5)
Enable/ing (L5.4)	Opportunities (C5.1.2, C5.1.4, L5.4, T5.4)	Well-supported (Ke5)
Enriched (C5.2)	Planning (C5, Ki5)	Work (C5.1.1, Ki5, L5.4)
Environment (T5)	Population (C5.1)	Youth (Ki5)
Events (L5)	Potential (Ki5)	
Everyone (Ke5, T5.1)		
Facilities (Ke5, Ki5, Ki5.1, L5, T5)		

**Issues specifically addressed within the theme of Social and Community Development:**

(C) Castleisland/Corca Dhuibhne MD, (Ke) Kenmare MD, (Ki) Killarney MD, (L) Listowel MD, (T) Tralee MD

**In all 5 MDs****Facilities & Services**

(C5.1.1, C5.1.2, Ke5, Ki5, Ki5.1, L5, L5.2, L5.4, L5.5, T5, T5.3, T5.4)

access/ible, activities, age-friendly, cater for all groups, childcare, community, delivered in consultation, education, excellent, flexible, health, informal, information system, local/ly, needs of our community, older citizens, resourced, structured, support(s), varied needs of all groups, youth

**Recreation & Sport**

(C5.1.1, C5.1.4, Ke5, Ki5, L5.4, T5.4)

abundance, accessible, activities, all ages, all groups, available, cultural, facilities, live healthy lives, locally, opportunities, pursue diverse interests, recreational, supported to be active, throughout the area, transport

**In 4 MDs****Connected & Included**

(Ke5, Ki5, Ki5.1, L5, L5.1, L5.2, L5.4, T5.1)

active, age friendly, all cultures, cherish, community, considered, consultation, diversity, empowered, everyone, good quality of life, groups, help each other, inclusive, informed, integrated public transport network, live life to the full, needs, no-one is left out, older citizens, quality of life, recreation, resilient, respected, safe, services, social, social connection, socially included, supported, throughout life, volunteers, wellbeing, work, youth

**Housing & Homes**

(C5.1.3, Ki5, L5, T5.2)

accessible, appropriate, attractive, community needs, design, good development, facilities, housing, infrastructure, options, policies, proactive planning, rural areas, settlement, suitable

**Infrastructure**

(C5.1.1, Ki5, L5, L5.2, L5.4, T5.1, T5.3)

accessible to all, arts, communications, community, community needs, connected, education, excellent, facilities, flexible, group(s), housing, integrated, network, older citizens, options, public, recreation, resourced, services, social connection, supports, transport, varied needs, work

**Planning & Development**

(C5.1.3, Ki5, L5, T5)

accessible, attractive, birth to old age, consultation, design, facilities, good development, housing, infrastructure, integrated approach, meet community needs, options, policies, proactive, rural areas, settlement, support

**Volunteering & Community Groups**

(Ke5, Ki5, L5, L5.5, T5.5)

active, assistance, artistic, celebrate, collaborate, community, community spirit, events flair, flourishing, help each other, importance, innovative, involved, recognise, sensible governance requirements, support(ed), user-friendly, vital, volunteers, wellbeing, well-resourced, work





## In 3 MDs

### Education & Training

(C5.1.2, L5.3, L5.4, T5.4)

access, be well, good, health education, lifelong, opportunities, support, transport

### Health & Wellbeing

(Ki5, Ki5.1, L5, L5.3, T5, T5.4)

access, consultation, education, excellent, facilities, fulfilled, healthcare, healthy, informal, local, lifelong, live healthy lives, needs (catered for), physical & mental health, recreational opportunities, services, structured, support, well, youth,

### Specific Needs

(C5.1.2, Ki5, Ki5.1, L5.2, L5.5, T5.5)

age friendly, childcare, consultation, education, infrastructure, needs, older citizens, health, services, volunteers, youth

### Transport

(C5.1.1, L5.4, T5.1)

accessible, comprehensive, excellent, infrastructure, integrated, network, opportunities, public, quality of life, recreation, services, work

## In 2 MDs

### Safe location

(Ke5, T5)

attractive, caters for all needs, healthy, safe, secure, well-maintained

## In 1 MD

### Heritage

(C5.2)

actively, community, enriched, heritage, history, shared, storytelling, tradition, vibrant



## VISION FOR

# Work, Economy and Resources

The visions of the 5 MDs under this heading are varied and wide-ranging. No universally common elements were identified.

### Issues and key words contained in specific MD Visions for Work, Economy and Resources include:

(C) Castleisland/Corca Dhuibhne MD, (Ke) Kenmare MD, (Ki) Killarney MD, (L) Listowel MD, (T) Tralee MD

Access/ accessibility (Ke6, Ki6, L6.3, T6.1, T6.2)	Incentives (C6)	Rural areas (L6.2)
Activities (Ke6)	Information (Ke6)	Sector (C6, Ki6)
Atmosphere (T6.4)	Infrastructure (Ke6, Ki6, L6, L6.4, T6, T6.1)	Services (Ke6, Ki6, L6.4)
Attractive (C6, Ke6, T6)	Innovative (T6)	Set up (C6)
Broad-based (Ki6)	Integrated (C6, L6.4, T6.1, T6.4)	Skills/ed (T6, T6.2)
Business/es (C6, Ki6, L6, L6.2, T6.1, T6.4)	Jobs (C6, L6, L6.3, T6.2)	Small (L6.2)
Commercial (L6, T6.1)	Joined-up (L6.4)	Social enterprise (L6.1)
Communications (C6, Ke6, Ki6, L6, L6.4)	Knowledge (Ke6)	Space (Ki6, L6)
Community (L6.4, T6.4)	Life/Live/ Livelihood (C6, Ke6, L6.4, T6, T6.4)	Sport (C6)
Comprehensive (Ke6, Ki6, L6)	Lively (T6.4)	Strategic thinking (L6.4)
Culture (L6.1)	Local Authority (L6.1)	Streamlined (Ke6)
Cyclists (Ki6)	Mentoring (L6.3)	Strong (Ki6, L6, T6.4)
Delivery (L6.4)	National policy (L6.1)	Structures (L6, T6.2)
Development (C6, Ki6, L6.4)	Potential (L6.1)	Succeed (C6)
Digital technologies (C6)	Network(s) (C6, L6)	Supports (Ke6, Ki6, L6, L6.2, L6.3, L6.4, T6, T6.1, T6.2, T6.3, T6.5)
Diverse/ified (C6, Ke6, Ki6, L6.1, T6.1)	Opportunities/ options (Ke6, Ki6, L6, L6.2, T6.2)	Sustainable/ green (C6, Ke6, Ki6, L6.1)
Dynamic (L6)	Paid/ unpaid (C6, T6.3)	Tailored (Ke6)
Economy (C6, Ke6, Ki6, L6, L6.1, T6, T6.1, T6.5)	Pedestrian(s) (Ki6)	Thrive (L6.2, T6.1)
Education (L6.3, T6.2)	People (T6, T6.2, T6.5)	Tourism (C6, Ki6)
Employment (Ke6, Ki6, L6.2, T6.3)	Place (C6, Ki6, L6)	Training (L6.3, T6.2)
Enterprise (C6, Ke6, L6.2, L6.4, T6)	Plan/ planning (C6, L6.4)	Transport/ traffic (C6, Ke6, Ki6, L6, L6.4)
Entrepreneur/ship (Ke6, T6.2)	Primary production (C6)	Vibrant (T6)
Environmentally sustainable (C6)	Proactive (T6.2)	Visit (T6)
Exciting (T6.4)	Public spaces (Ki6)	Well-connected (C6)
Expertise (Ke6)	Quality of Life (Ke6)	Well-maintained (Ki6)
Facilities (C6, T6)	Recreation (C6, L6)	Well-managed (Ki6)
Flexible (Ke6, L6.2)	Remote (L6.2)	Well-paid (C6)
Future (C6)	Residential life (T6.4)	Work/ worker(s)/ workforce (C6, Ke6, L6, L6.4, T6, T6.2, T6.3)
Heritage (L6.1)	Resilient (Ke6, T6.1)	Work/life balance (T6)
History (L6.1)	Resourcefulness (Ke6)	Year-round (Ke6, Ki6)
Housing (C6, L6, L6.4)	Road (L6)	Youth (L6.3)
	Robust (C6, Ki6)	



**Issues specifically addressed within the theme of Work, Economy and Resources:***(C) Castleisland/Corca Dhuibhne MD, (Ke) Kenmare MD, (Ki) Killarney MD, (L) Listowel MD, (T) Tralee MD***In all 5 MDs****Attractive Location***(C6, Ke6, Ki6, L6, T6, T6.4)*

accessible, atmosphere, business life, community, daily life, economy, enjoy, exciting, fabric, for all, happy, housing, integrated, live, lively, managed, people, proud, public spaces, quality of life, recreation, residential life, sport, strong, support, vibrant, visit, well-maintained, wonderful, work, work/life balance

**Diversity***(C6, Ke6, Ki6, L6.1, L6.2, T6.1)*

broad-based, business(es), business-friendly, commercial, culture, developing/ development, diverse/ diversified, economy, employment, enterprise, environmentally sustainable, flexible, green heritage, history, jobs, maximises, natural environment, new, opportunities, potential, remote, resilient, rural areas, small, social enterprise, strong, supports, sustainable, year-round

**Infrastructure***(C6, Ke6, Ki6, L6, L6.4, T6, T6.1)*

access to employment, attractive, commercial space, communication(s), comprehensive, cornerstone(s), delivery, development, diversified, economy, enterprise, excellent, facilities, housing, information, innovative, integrated, joined-up, network(s), planning recreation, road, robust, services, sport, strategic thinking, successful, support/ed, sustainable, transport, universally-served, well-connected

**New Development***(C6, Ke6, Ki6, L6, L6.2T6, T6.2)*

business, communications, create, development/ developing, digital technologies, dynamic, employment, entrepreneurship, expertise, forefront, green jobs, increasing, information, infrastructure, innovative, job(s), knowledge, local, new, opportunities, primary production, remote, resilient, resourcefulness, rural areas, set up, small, succeed, supports, well-paid, work, year-round

**In 4 MDs****Amenities & Recreation***(C6, Ki6, L6, L6.1, T6, T6.4)*

atmosphere, culture, cyclists, daily life, diverse, enjoy, exciting, facilities, heritage, history, integrated, live, lively, natural environment, opportunities, pedestrians, promote, public spaces, recreation, residential life, sport, support, sustainable, transport, tourism, visit, visitors, well-maintained, well-managed, wonderful, year-round

**Enterprise Supports***(C6, Ke6, L6, L6.2, T6.1)*

business(es), business-friendly, commercial space, create, enable, encourage, enterprise, entrepreneurship, environment, expertise, incentives, information, infrastructure, knowledge, Local Authority, national policy, new, one another, public spaces, recognise, remote, resourcefulness, rural areas, services, set up, small business(es), streamlined, structures, succeed, support(s), tailored, work

**Green, Sustainable Economy***(C6, Ke6, Ki6, L6.1)*

beautiful, broad-based, comprehensive, culture, diverse/ diversified, economy, forefront, green jobs, heritage, history, maximises, natural environment, options, potential, resilient, sustainable enterprise, tourism, transport, year-round

**Tourism***(C6, Ki6, L6.1, T6)*

basis, beautiful, broad-based, business, communications, comprehensive, culture, development, diverse, diversified, excellent, good employment, happy, heritage, history, infrastructure, leading, maximise, natural environment, potential, sector, strong, sustainable, visit, year-round





## In 3 MDs

### Employment Support

(C6, L6, L6.2, L6.3, L6.4, T6, T6.2, T6.3, T6.5)

accessible, business(es), co-ordinated, create, education, enterprise, facilities, flexible, green jobs, entrepreneurship, infrastructure, incentives, jobs, local/ly, mentoring, new, opportunities, options, people, proactive, remote, rural areas, seeking work, skill(s), small, solid, structures, supports, training, well-structured, work/workers, youth

### Planning

(C6, L6.4, T6.1, )

communications, community, co-ordinated, dedicated, delivery, development, economy, enterprise, excellent, future, housing, infrastructure, integrated, joined-up, local, plan, proactive, services, strategic, thinking, transport, well-structured, worker(s)

### Strong Community

(Ke6, L6.3T6.4, T6.5)

active/ly, all, atmosphere, attractive, enjoy, exciting, fabric of community, live, livelihoods, lively, people, place, pride, proud, quality of life, resilient, strong, support, year-round, youth

## In 2 MDs

### Transport

(Ki6, L6, L6.4)

accessible, community, comprehensive, cyclists, delivery, development planning, effective, enterprise, infrastructure, integrated, joined-up, management, network, options, pedestrian(s), road, robust, service(s), strategic thinking, support, sustainable, transport, universally served, workers







## MUNICIPAL DISTRICT COMMUNITY WELLBEING VISION STATEMENTS

### Castleisland/Corca Dhuibhne MD Vision for Community Wellbeing

#### *Overall Vision*

In Castleisland/Corca Dhuibhne Municipal District we enjoy the fruits of healthy living within our picturesque landscape. Thinking here is future-focused, promoting growth and prosperity. The dynamic and diverse economy, great infrastructure and facilities make this area an attractive, safe, place to live and work. Culture and tradition are influential and integral elements of life here. Our people are our greatest asset. They are central to our economy, sustain our culture, treasure and share our heritage and protect our environment. We have a strong sense of community that encompasses everyone.

#### 1.0 | Culture, Values and Meaning

Our Irish culture resonates throughout, in activities from sport and music, to storytelling and craftsmanship. We strive to ensure our people can work and live well here as they are central to sustaining our culture. We welcome other nationalities to integrate and participate in sharing our culture across all age groups as it is passed on from generation to generation.

We protect, preserve, and share our history and built heritage. We celebrate and honour these through festivals and other commemorations. This rich cultural heritage attracts many visitors to the area and our tourism sector is well developed and supported.

##### SDG links:



#### 2.0 | Environment and Sustainability

We are all environmentally conscious. We reduce waste and use best practice to manage waste carefully. We rely on green energy and eco-friendly transport systems. We have unpolluted natural resources and actively protect our precious natural environment. The community is supported to provide and maintain green outdoor spaces for recreation. We value and care for our built surroundings and heritage.

##### SDG links:



### 3.0 | Health (Physical and Mental)

In Castleisland/Corca Dhuibhne Municipal District all our public spaces are fully accessible, and we have a variety of affordable housing to meet the needs of different groups within the community, with supports provided for safe and independent living. We are all familiar with the excellent community health services and resources available locally. Strong social connections that include everyone are supported. These, along with good mental health services, are critical to our wellbeing. We have an elaborate, accessible, network of walking routes, facilities for cycling and opportunities for people of all ages and abilities to get outdoors and enjoy our natural amenities. Together these provide the fundamentals for good healthy living within our community.

SDG links:



### 4.0 | Participation, Democracy and Good Governance

This area is renowned for business development and good employment. There is transparent communication between our community and our local representatives and Local Authority, allowing for honest and assertive conversation to secure the best interests of the local community. The Local Authority shares all information specific to this area and those taking decisions are clearly accountable for their action. This is a safe area, with effective traffic management and obvious Garda presence throughout the community. We have many active local groups that we value for their contributions to our wellbeing.

SDG links:



### 5.0 | Social and Community Development

5.1. Our local population is supported with:

- 5.1.1 excellent communications and transport infrastructure that makes work, recreation and services accessible for all;
- 5.1.2 accessible and affordable local childcare and education opportunities;
- 5.1.3 proactive planning, housing and settlement policies, particularly in rural areas;
- 5.1.4 an abundance of recreation and sports opportunities available for all ages throughout the area.
- 5.2 Our community is enriched by our local history and heritage which is actively shared through our vibrant storytelling tradition.

SDG links:



## 6.0 | Work, Economy and Resources

We have a dedicated plan for the future development of our local economy. There are good incentives to encourage businesses to set up and succeed and to create well-paid work. Our well-connected and integrated transport and communications networks are cornerstones for our robust and diversified economy which ranges from primary production to digital technologies. We are at the forefront of developing environmentally sustainable enterprise and green jobs. Our beautiful natural environment is the basis for our leading tourism sector. A range of local housing, sport and recreation facilities make this an attractive place to live and work.

SDG links:









## MUNICIPAL DISTRICT COMMUNITY WELLBEING VISION STATEMENTS

### Kenmare MD Vision for Community Wellbeing

#### *Overall Vision*

We are a resilient and inclusive community, with a strong local democracy. We have excellent resources, supports and infrastructure that ensure all enjoy a good and healthy quality of life in this unique and unspoilt environment. We live and work sustainably, and our diverse and flourishing economy supports good livelihoods for all. We treasure our history, heritage and culture and work to ensure it is enjoyed for generations to come.

---

#### 1.0 | Culture, Values and Meaning

We have a strong sense of community and place. Everyone is welcome, valued and included in all aspects of life and work. We work together creatively to maintain a vibrant community, enriched by multiple cultures and diversity. Our Irish language, music and folklore is alive, and we actively cherish our unique traditions, craftsmanship and sports. Supports and resources are in place to make these accessible for this and future generations. We protect and showcase our precious archaeological and built heritage. There are supports available for culture and the arts.

##### SDG links:



#### 2.0 | Environment and Sustainability

We are well-educated and understand the value of our high-quality natural environment and how to care for and sustainably manage all aspects of it. In practice, we reduce waste and activities that damage our biodiversity and public health. We actively protect our environment, biodiversity and use our natural resources sustainably. We have innovative green transport systems and energy production. Communities have good access to outdoor recreation areas, and we have excellent opportunities to enjoy our wonderful nature and scenery. We have robust planning and design in place that incorporates future proofing.

##### SDG links:







### 3.0 | Health (Physical and Mental)

We have a comprehensive local health service with supports and resources in place for mainstream and holistic approaches for all within our community. Everyone has access to appropriate health care including emergency and out-of-hours services.

We are all educated and understand the importance of good mental health. We support one another in the community and have access to high quality mental health services and assistance as needed. We are well-informed and enabled to live healthy and active lives, with accessible opportunities for sport, recreation, and local food production. Through consultation, suitable provision and supports are put in place for all people with disabilities in our community.

SDG links:



### 4.0 | Participation, Democracy and Good Governance

We are all well-informed and proactively engage in our strong local democracy. Our local authority and elected representatives communicate effectively and consult meaningfully with all of us, allowing us to input to the decisions that affect us. We have easy access to information and bureaucracy is minimised. All policy areas, such as housing provision, safe and sustainable transport, and the arts, are co-ordinated across agencies and rural proofed to address local needs.

SDG links:



### 5.0 | Social and Community Development

We cherish all members of our community throughout their lives. We live in safe, attractive, and well-maintained neighbourhoods. There are activities and facilities that cater for all groups locally. Everyone is kept informed about these through our excellent local information system. We are well-supported to come together, to help each other and to live life to the full.

SDG links:



### 6.0 | Work, Economy and Resources

We have excellent, sustainable, and comprehensive transport, communications, and services infrastructure throughout the Municipal District. This sustains enterprise and access to employment, making this an attractive place to live and work. Our diverse economy and flexible employment opportunities are enabled through tailored supports. These recognise local entrepreneurship and resourcefulness and build on local knowledge and expertise. We share easy access to streamlined information on supports, services and activities in the area. In these ways we ensure resilient, year-round livelihoods and good quality of life for all.

SDG links:









## MUNICIPAL DISTRICT COMMUNITY WELLBEING VISION STATEMENTS

### Killarney MD Vision for Community Wellbeing

#### *Overall Vision*

We are a resilient and inclusive community that embraces diversity and has a strong culture of volunteering. We have excellent and integrated facilities, services, and infrastructure. We live sustainably and well - supported by our effective local democracy and broad-based economy. We protect and enjoy our unique surroundings and we treasure our local heritage and share it with future generations.

#### 1.0 | Culture, Values and Meaning

We are an integrated community where everyone is respectful of all aspects of our different cultures and diversity. This is an inclusive community where we are supported to connect with one another across all different age groups and abilities. We capture, celebrate and pass on all aspects of our Irish culture, skills and traditions and we protect, preserve, and share our history and built heritage.

##### SDG links:



#### 2.0 | Environment and Sustainability

From school, and throughout our lives, we are educated and well-informed about our precious natural environment and how to live sustainably. All of us have great opportunities to get out and enjoy the unique and spectacular outdoor spaces that we have. We have a safe and well-planned green transport system and a range of initiatives that minimise waste and manage it effectively.

##### SDG links:







### 3.0 | Health (Physical and Mental)

We have outstanding and well-resourced facilities and amenities that support the health and wellbeing of all different group in the community. We have safe, attractive, and accessible public spaces and infrastructure that provide opportunities for sport and recreation for all. We all contribute positively to our community. The vital work of our volunteers and carers is recognised and supported. we have excellent health services including outreach and addiction supports.

#### SDG links:



### 4.0 | Participation, Democracy and Good Governance

Our important volunteers and active community groups are supported by streamlined administrative requirements, affordable costs, training, and skills development. Our strong local democracy is inclusive, conscientious, and focused on our wellbeing, based on active community consultation. This ensures that the needs of all diverse groups within the community are known and understood.

#### SDG links:



### 5.0 | Social and Community Development

In Killarney Municipal District we live life to its full potential. We have an integrated approach to good development planning and design. This delivers attractive and accessible housing, infrastructure and facilities which meet the needs of our community. These needs are identified through effective consultation. We are a resilient and inclusive community where we are all supported to be active, pursue diverse interests, and to live healthy and fulfilled lives. We recognise and support the vital work of our active volunteers and community groups that collaborate in working for the wellbeing of the whole community.

- 5.1. We support the physical and mental health and wellbeing of our youth through the provision of a range of structured and informal services and facilities, delivered in consultation with them.

#### SDG links:



### 6.0 | Work, Economy and Resources

We have a strong, broad-based economy that includes a diverse, year-round, and sustainable tourism sector. This provides good employment and opportunities for new business development, supported by excellent communications and comprehensive infrastructure. We have effective traffic management with robust and fully accessible public transport infrastructure and services, as well as support for pedestrians, cyclists, and other sustainable transport options. We have wonderful, well-maintained, and managed public spaces accessible for all to enjoy.

#### SDG links:









## MUNICIPAL DISTRICT COMMUNITY WELLBEING VISION STATEMENTS

### Listowel MD Vision for Community Wellbeing

#### *Overall Vision*

Ours is a tight-knit, multicultural community where our precious Irish heritage is treasured and explored. Sustainable living allows us to protect and preserve our natural environment for future generations. Good infrastructure and services, and the dynamism of our economy enables endless opportunity and incentive for all. There is strong community participation in transparent local democracy and we all love life to our full potential.

#### 1.0 | Culture, Values and Meaning

Our Irish heritage and history are treasured and celebrated with our culture and traditions practised and deep-rooted in our consciousness. Our flora and fauna, landscape and built environment are protected and admired for their natural beauty, uniqueness, and importance. Life-long learning is at the core of our diverse and multicultural community.

- 1.1 All aspects of Irish culture, traditional livelihoods, and skills are very much alive here, are well-documented, and are supported to continue.
- 1.2 We are well-informed and actively protect our natural environment and biodiversity.
- 1.3 We are a cohesive community that shares its rich diversity and different cultures.
- 1.4 The area is renowned as a hub of creativity.

#### SDG links:



#### 2.0 | Environment and Sustainability

We are environmentally conscious, well-informed and supported to live sustainably and we work to ensure the protection of our heritage, environmental and vital natural resources.

- 2.1 We are all educated and able to prevent pollution, reduce waste production, maximise re-use and recycling and we use best practice to manage waste.
- 2.2 We embrace various forms of green transport that cater to different demands within the community. We use sustainable energy sources.
- 2.3 All of us are supported to be proactive in preservice, protecting, and enhancing our natural and built environment. We promote understanding of these and respectful enjoyment of them.

#### SDG links:



### 3.0 | Health (Physical and Mental)

Our diverse community is a welcoming and accessible place where strong, positive relationships can be formed and sustained. We have an impressive network of facilities and services that support us to be well and live life to its full potential. Our quality local food production compliments this.

- 3.1 Our comprehensive range of sport and recreation activities are the foundation of healthy living for all to enjoy.
- 3.2 We have excellent physical and mental health services and supports, accessible locally, which respond to the different needs of diverse groups within the community.
- 3.3 We support sustainable transport options and have a regular, affordable and efficient public transport system that is flexible and able to meet the different needs in our community.
- 3.4 We have a variety of local and community food production models which many participate in and that provide high quality produce.

**SDG links:**

### 4.0 | Participation, Democracy and Good Governance

Local democracy in Listowel Municipal District is truly representative, open, transparent, and fully accountable. All the community is kept well-informed, genuinely consulted, and involved in the decision-making process.

- 4.1 Our elected representatives reflect the diversity in the community and feedback regularly to the whole community in an open and accountable manner.
- 4.2 The Local Authority communicates effectively and provides opportunities for meaningful consultation that allow us to influence the outcome of decisions that affect us and to see how those decisions are made.
- 4.3 Funding and grants are allocated to community groups in an open and transparent manner. Appropriate supports and resources are provided to enable all within the community to participate.

**SDG links:**



## 5.0 | Social and Community Development

Our diverse community is inclusive of all, with excellent healthcare, housing options, community facilities and infrastructure and arts in place to support us. Community Spirit is tangible with volunteering and assistance flourishing along with events celebrating the artistic flair within the community.

- 5.1 Listowel Municipal District is a community where no-one is left out, where all cultures and diversity are respected, considered, and empowered.
- 5.2 This is an age friendly community where the needs of our older citizens are addressed effectively in infrastructure and services.
- 5.3 Excellent, local health services and health education support us to live healthy lives and be well.
- 5.4 We have comprehensive, fully accessible, public transport that supports a good quality of life by providing for social connection and enabling us all to reach services, work, education and recreation opportunities.
- 5.5 We recognise the importance of our volunteers and community groups which are supported and well-resourced.

### SDG links:



## 6.0 | Work, Economy and Resources

Our local economy is dynamic, with business and job opportunities galore thanks to strong and efficient structures and supports that are in place. The area is universally served by a comprehensive road and transport network, communications infrastructure, housing and commercial space, supporting daily life, recreation and business.

- 6.1 We have a diversified and sustainable economy that maximises the potential of our natural environment, heritage, history, and culture.
- 6.2 There are supports provided to enable new and small businesses to thrive and for enterprise in remote and rural areas. These contribute to providing the flexible and solid employment options that are available.
- 6.3 We support our youth through provision of accessible jobs, education, training and mentoring.
- 6.4 There is excellent, joined-up strategic thinking in development planning and delivery of infrastructure. This means that we have integrated provision of transport, housing, communications and services that support enterprise, workers and the wider community.

### SDG links:









## MUNICIPAL DISTRICT COMMUNITY WELLBEING VISION STATEMENTS

### Tralee MD Vision for Community Wellbeing

#### *Overall Vision*

We are proud to live well in an attractive, diverse and inclusive area, supported by a vibrant economy and with a secure, safe and healthy environment. We are all actively involved in our flourishing cultural life, sports and recreation. We benefit from first rate services and infrastructure. We have strong local government and all voices are listened to and respected.

#### 1.0 | Culture, Values and Meaning

We live in a diverse, inclusive, town; learning, living alongside and respecting one another's cultural values and traditions. We celebrate [and encourage] difference and the changing faces of our community. We cherish our exciting arts, language and folklore, and ensure that it is accessible to all. All generations come together to experience, appreciate and enjoy our rich cultural heritage. We are willing custodians who honour and preserve our built heritage and the architectural history of our town. We value and protect our green spaces and historic parks.

##### SDG links:



#### 2.0 | Environment and Sustainability

We live sustainably, safe and well, working to protect the environment and biodiversity that we depend on.

- 2.1 We have energy efficient homes and businesses and all new development is green and sustainable.
- 2.2 Our waste management is environmentally friendly and we encourage and incentivise business and all residents to minimise waste production.
- 2.3 An excellent, affordable, green transport network ensure all areas of Tralee are accessible and well connected.
- 2.4 We continue to cherish, protect and enhance our natural environment, biodiversity and natural resources, that are accessible and enjoyed by all.
- 2.5 We have imaginative and innovative planning and design that delivers our vibrant townscape, with a relaxed and calm atmosphere, and safe, green development for sustainable community living.
- 2.6 We live sustainably and recognise the important environmental work of community groups.

##### SDG links:



### 3.0 | Health (Physical and Mental)

Tralee is a healthy and safe environment. We are well-informed and active in ensuring our health and wellbeing. We are all supported in this through access to excellent physical and mental health services and recreational opportunities.

- 3.1 We have a holistic, intelligent, and non-judgemental approach to our mental health and wellbeing. Our community is designed to be fully accessible and healthy. We recognise specific needs, provide appropriate and essential supports for these, and we nurture and mind each other.
- 3.2 We have comprehensive and integrated health services, where statutory and community service providers work together to deliver the best possible support.
- 3.3 There are excellent, accessible, services available to support lifelong mental health and wellbeing.
- 3.4 We make use of the wide range of affordable opportunities open to all of us to engage in sports, recreation and food production which support our health and wellbeing.
- 3.5 We are educated throughout our lives on how to build safe and respectful relationships and on how we can live healthily and well.
- 3.6 We acknowledge and recognise the various forms of lifelong learning and achievements. We are fully informed and responsible for the safe and effective use of technologies in work and for recreation.

SDG links:



### 4.0 | Participation, Democracy and Good Governance

All voices within our community are recognised, listened to, and respected from our youngest to our oldest citizens. We trust our Local Authority to provide clear communication and meaningful consultation with community groups and all citizens in the Municipal District. We can trace issues from when they are raised to their final outcome and those involved can be held accountable for their actions and decisions. We have joined-up, seamless delivery of services. Community groups have streamlined governance requirements, resources, and supports for training, mentoring and conflict resolution. They are empowered to participated fully on an equal footing.

SDG links:



## 5.0 | Social and Community Development

We live in a secure, safe, and healthy environment that caters for all our needs; physical, mental, social and environmental, from birth to old age. All of us in our diverse community have access to facilities that assist us to support one another and live our best lives.

- 5.1 Everyone is socially included within our connected community, supported by an excellent integrated public transport network.
- 5.2 All residents live in suitable and appropriate homes.
- 5.3 Our community infrastructure, supports and services are fully resourced, flexible and accessible to all, responding to the varied needs of all groups.
- 5.4 We have good access to lifelong education, health services and recreational and cultural opportunities.
- 5.5 We are active volunteers, involved in innovative, well-resourced community groups who are supported by user-friendly and sensible governance requirements

**SDG links:**



## 6.0 | Work, Economy and Resources

We are proud that Tralee is an attractive and vibrant economy, and that people are happy to live, work and visit here. We have excellent innovative facilities and infrastructure to support successful enterprise and skilled workers with a good work/life balance.

- 6.1 Diverse commercial and social enterprises thrive here in our resilient economy. National policy and our Local Authority create a business-friendly environment where businesses support one another and have access to excellent, integrated infrastructure.
- 6.2 We have an abundance of well-structured, proactive, and co-ordinated education, skills and training opportunities, accessible to all. This supports our skilled workforce, enabling people to access jobs locally and increasing entrepreneurship.
- 6.3 We support those in paid and unpaid employment, those seeking work and those unable to work.
- 6.4 There is an integrated business and residential life that adds to the exciting, lively, atmosphere and strong fabric of community within the town.
- 6.5 We take pride in actively supporting our local economy and our people.

**SDG links:**





*Notes*





**Líonra Páirtíochta Pobail Chiarraí**

**KERRY PUBLIC PARTICIPATION NETWORK**

*The Voice of the Community*

For further information contact

Caroline Toal

Kerry Public Participation Network Development Officer  
Kerry County Council

Tel. 066 718 3672

Email: [ctoal@kerrycoco.ie](mailto:ctoal@kerrycoco.ie)



An Roinn Forbartha  
Tuaithe agus Pobail  
Department of Rural and  
Community Development



**Líonra Páirtíochta Pobail Chiarraí**  
KERRY PUBLIC PARTICIPATION NETWORK